



Inkursive Pens  
Unit 11, The Forum  
Eastgate St.  
Gloucester  
GL1 1PL  
United Kingdom  
<https://inkursive.com>  
[tom@inkursive.com](mailto:tom@inkursive.com)



<https://inkursive.com/aman-new-fude-thanks>

Scan the code to download these instructions as a pdf and get money off coupons

# Inkursive Amanuensis Pen with Fude nib

Dear Customer,

Thank you for purchasing an Inkursive pen, I hope it gives you many years of valuable use. I have made some notes below to help you get the best out of it.

This pen is not intended for use by children under the age of 14.

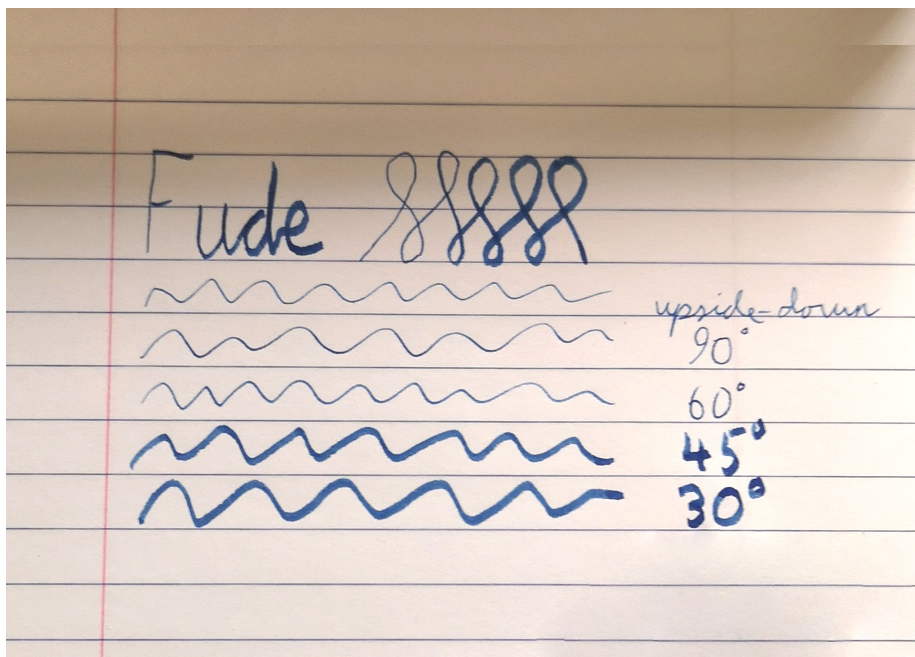
In case of any issues, please contact me first before leaving feedback as I may be able to rectify the problem.

**Please note as this is a new pen, after inserting a cartridge for the first time it can take up to a minute for the ink to come through to the nib.**

## Features:

- Fude nib for Chinese Calligraphy, Kanji and Art
- Fill from bottled ink with the included converter
- Elegant design with golden highlights
- Screw-on cap
- Cartridges included

## Use



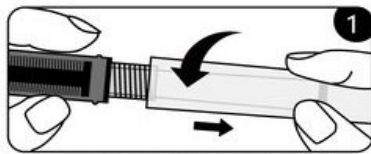
The Fude (pronounced 'food - eh') nib - also called a 'bent nib' - is designed to replace a traditional ink brush for Chinese and Japanese writing. They have also been used for western calligraphy and art.

The width of the stroke is controlled by varying the angle you hold the pen. Hold the pen at a shallow angle for the widest line.

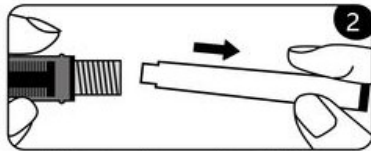
You can also write with the nib upside-down for a thinner line.

## Filling

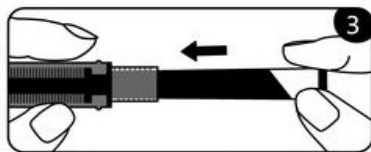
### Replacing a cartridge



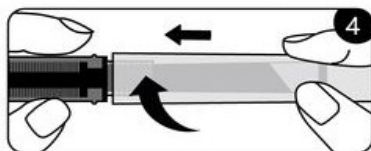
Unscrew the barrel



Remove the empty cartridge

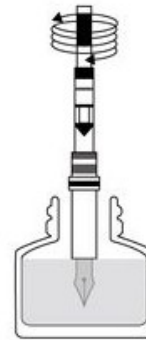


Insert the cartridge. Push until it clicks



Screw the barrel back on

### Filling the converter



Insert the nib into the ink.

Twist the converter knob till the converter is full

Use only fountain pen ink. Other inks may contain particles that can clog the nib. This pen takes standard international cartridges.

## To use a cartridge

Take a new ink cartridge and push the open end firmly into the pen's feed (the pointed end of the pen). You'll usually feel or hear a little click as the cartridge punctures and starts to release ink. It can take a while for the ink to fully saturate the pen, so don't worry if it doesn't start writing right away.

If you have any issues or comments, please contact me on the email above or via the site where you purchased the pen.

Please leave feedback for the pen wherever you bought it, whether your experience was good or bad, as this helps other buyers as well as myself.

Again thank you for your purchase, and I hope you enjoy your new pen,

Tom Kelsey

**PS If you have time, I would love to hear your thoughts and/or pictures of your new pen on a review where you bought it**

Please see <https://inkursive.com> for the full catalogue.



Star Seller on Etsy

Top Rated Seller with 100% positive feedback on eBay

100% 5 star shop reviews on Amazon UK

Statistics checked on 1<sup>st</sup> May 2024